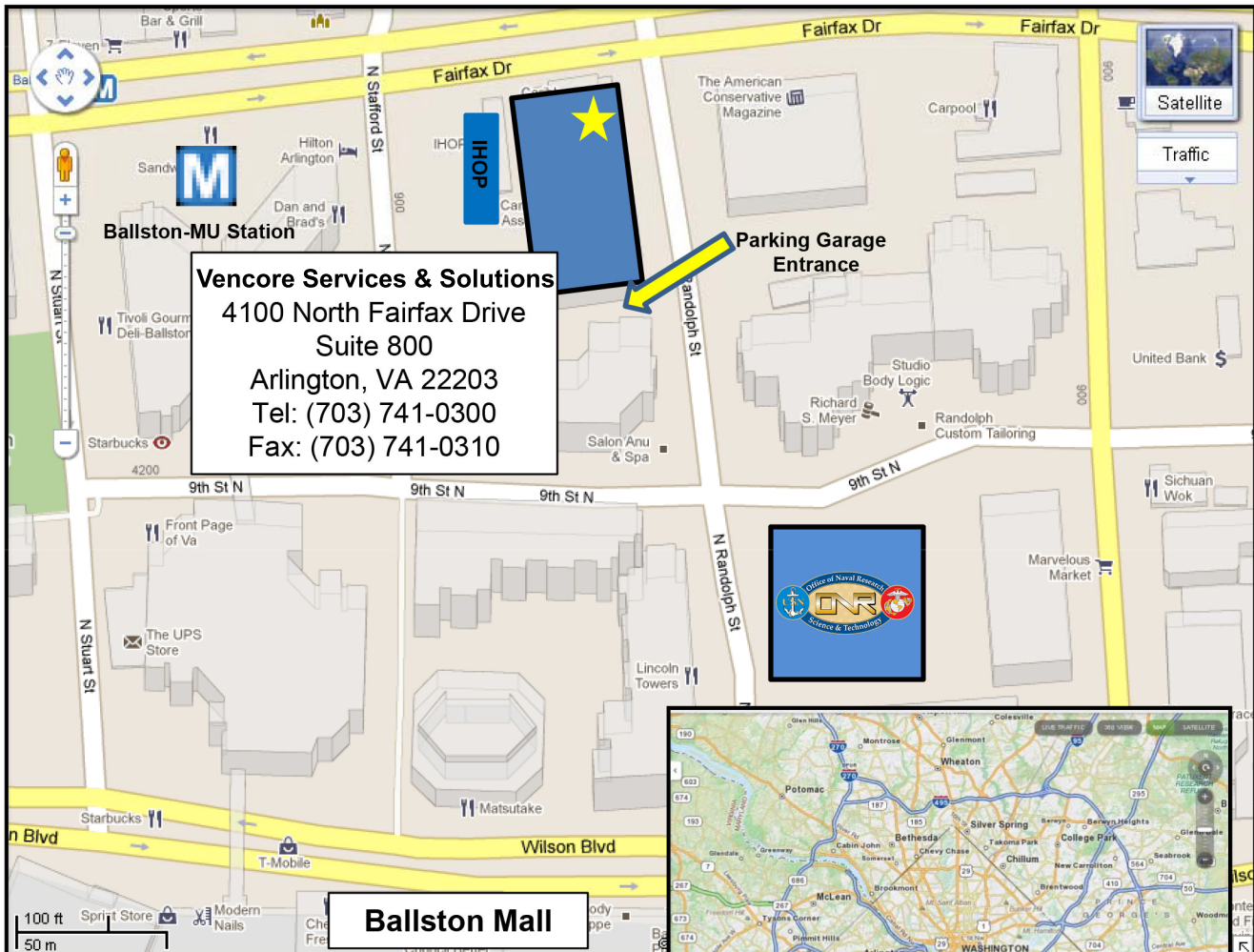


Directions to Vencore Services and Solutions, Inc. Arlington, VA



Vencore Services & Solutions
4100 North Fairfax Drive
Suite 800
Arlington, VA 22203
Tel: (703) 741-0300
Fax: (703) 741-0310

Ballston Mall

From I-66

- Take Exit 71 N. Glebe Road (if on I-66 West), or N. Fairfax (if on I-66 East)
- Stay (or turn left from Glebe) on N. Fairfax Drive
- Go to the sixth traffic light (N. Randolph St.)
- Turn right at the traffic light

From I-395

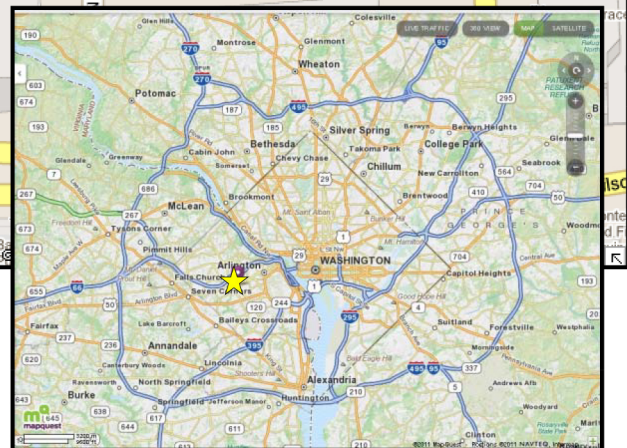
- Take N. Glebe Road approximately 4 miles to N. Randolph St.
- Turn right at the traffic light
- After 2 traffic lights (3 counting Ballston Mall Parking), parking garage is in the middle of the block

From I-495

- Take I-66 East to Exit 71
- Follow I-66 directions

Metro

- Take the orange line to the Ballston-MU stop
- Walk 1 ½ blocks to the intersection of N. Fairfax and N. Randolph (behind the IHOP)



Designated Parking Areas

- Limited parking is available in the parking garage on levels P2-P5 for a prepay fee of \$8. In addition, there are meters with a 2 hour limit on N. Randolph Street. There is also hourly public parking at the Ballston Mall, with entrances on N. Randolph St. and Glebe Road.

Lobby Access

- The entrance is on the N. Randolph Street side. The elevators are in the center of the building
- If parking in the Parking Garage is available, the elevators will go to the ground level, then walk past the lobby attendants desk to the building elevators